



Sailboat Block

This makes a 12 ½" unfinished block.



Color 1 – Blue stripe for water
One – 3 ½" x 12 ½" rectangle



Color 2 – Boat body
One – 3 ½" x 6 ½" rectangle
One – 4" square



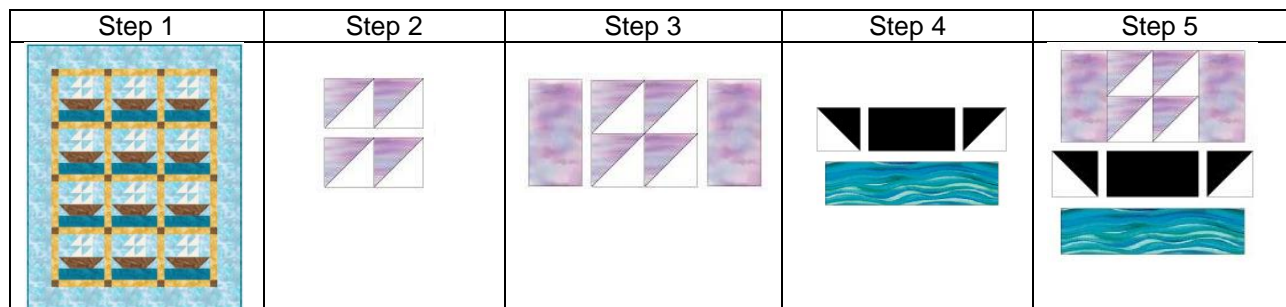
Color 3 – White sails
Two – 4" squares



Color 4 – Light blue for Sky
Two – 3 ½" x 6 ½" rectangle
Three – 4" square

Press seams per instructions.

- 1) Pair the 4" sky squares with the sail squares. Set aside. Pair the 4" sky square with the 4" boat square. Inspiration for finished quilt in figure below for Step 1.
- 2) Draw a line on the wrong side of the fabric or press lightly on the diagonal across each set of 4" pairs. With right sides together, stitch ¼" on **each** side of the diagonal line. Cut apart on the draw/press line to make a total of 6 half square triangles-HST- (4 sail HSTs and 2 boat HSTs). Press to the dark. Trim to 3 ½" (refer to figure below for Step 2).
- 3) Sew the four (4) sail squares to make a 6 ½" x 6 ½" square. Sew a sky rectangle (3 ½" x 6 ½") to each side of the block (refer to figure below for step 3). Press seam allowances toward the sky rectangles. Trim to 6 ½" x 12 ½".
- 4) Sew a sky/boat HST to each short end of the boat rectangle (refer to figure below for step 4 for placement). Press seam allowances toward the black rectangle (boat body). Trim to 3 ½" x 12 ½".
- 5) Position the water rectangle under the boat row. Sew the water to the boat row (measure should be 6 ½" x 12 ½"), and then add the sails to the top of the boat/water block. Press seam allowances toward the bottom of the block. Assemble the block as shown below in the figure for Step 5. Trim the completed block to 12 ½" square. Have fun!



Calvert County Quilt Guild
Block of the Month
August 2017

Light blue sky, darker blue water,
sails and boat are your choice.

Block seams are ¼".
Thanks to thespruce.com